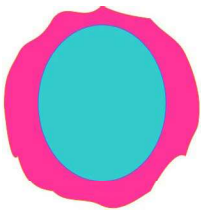
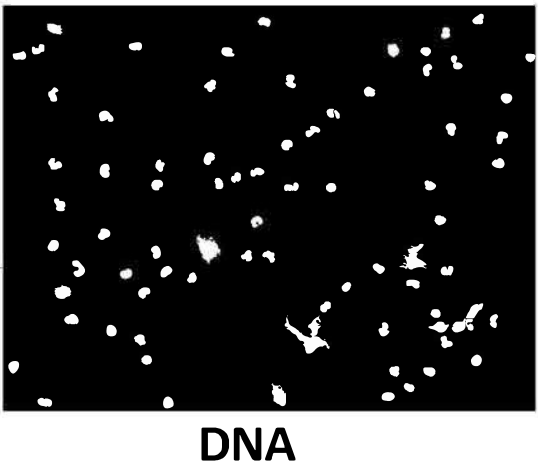
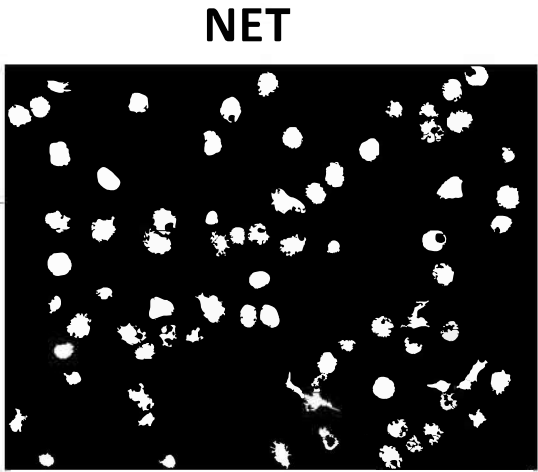
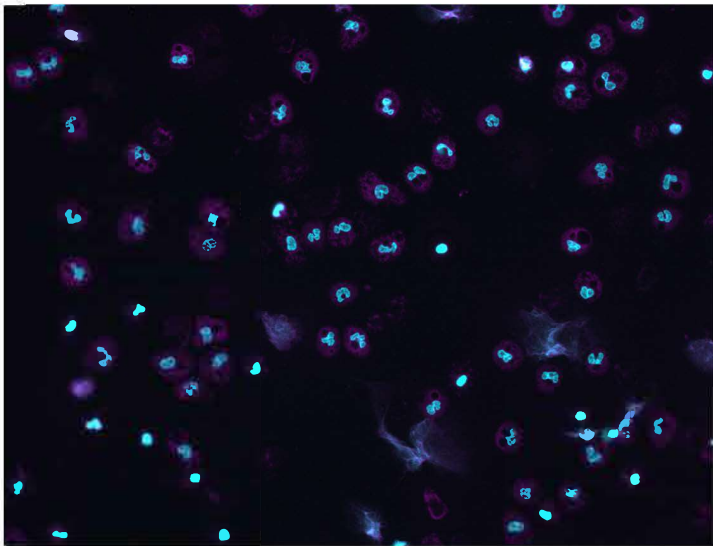


IMAGE PROCESSING

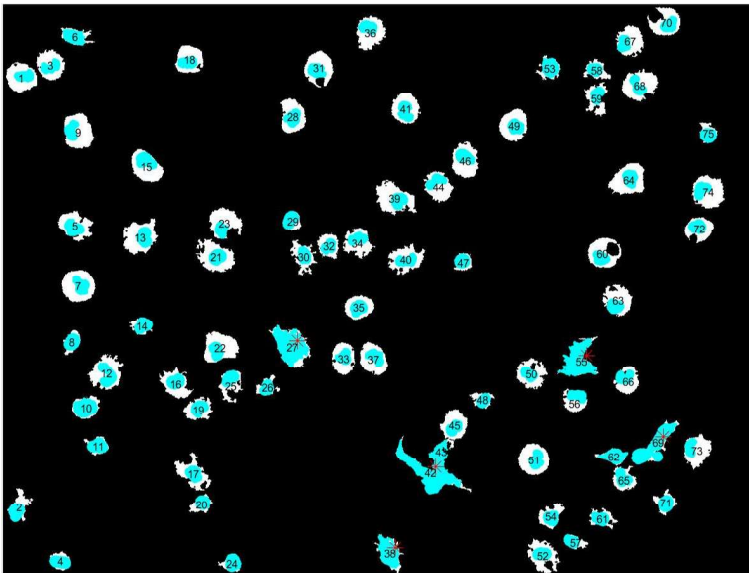
IMAGE SEGMENTATION

SINGLE-CELL
ANALYSIS

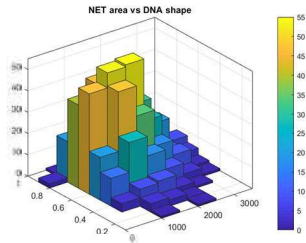
NET DETECTION



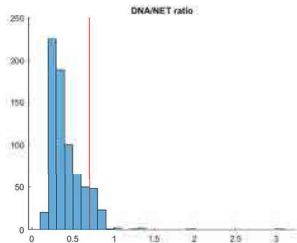
- NET-criteria
- 1. NET area
 - 2. Nuclear deformation
 - 3. DNA/NET area ratio



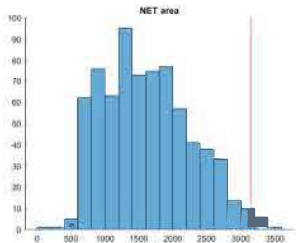
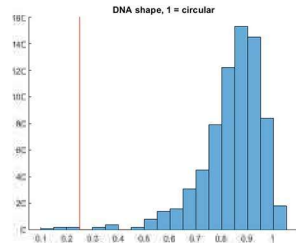
RESULT
OUTPUTS



3D Graph



Histograms



cellNo	shape	netArea	ratio	shape	netArea	ratio	shape	netArea	ratio
1	462	1514	0.203801	0.513309	0.547245	0.730227	2370.13	10989.15	
2	462	1784	0.208794	0.497803	0.517021	0.8255	10944.4	10989.49	
3	558	1087	0.176187	0.411451	0.742054	0.410278	2895.04	9987.745	
4	549	164	0.021275	0.070601	0.506055	0.205460	4193.52	11231.43	
5	549	1815	0.308171	0.900474	0.780396	0.451847	2943.90	11132.84	
6	542	1024	0.164075	0.072344	0.788399	0.401896	2573.52	11170.95	
7	479	1424	0.133985	0.931437	0.718884	0.402886	4535.04	9870.95	
8	600	779	0.038621	0.121189	0.601878	0.648916	4486.7	14939.27	
9	603	3258	0.20541	0.027027	0.487345	0.821252	3905.26	10111.92	
10	589	2418	0.240161	0.734976	0.714175	0.316023	1170.12	12504.48	
11	542	942	0.048947	0.948946	0.171721	0.514299	4234.62	12545.71	
12	522	873	0.041428	0.583048	0.542475	0.537713	4361.61	14504.44	
13	518	1073	0.197974	0.781616	0.600519	0.519187	3018.15	10703.44	
14	542	1284	0.434554	0.900001	0.481041	0.560454	4132.11	12389.24	
15	577	1493	0.148111	0.911144	0.714443	0.434351	1451.15	10301.46	
16	545	849	0.048951	0.884843	0.789183	0.550264	4272.27	12105.55	
17	542	1772	0.149497	0.048874	0.478874	0.333887	1454.14	12501.45	
18	487	1295	0.180602	0.474046	0.799125	0.468647	4142.81	11515.95	
19	476	1464	0.048959	0.077036	0.149447	0.848112	4124.86	10121.16	
20	488	827	0.190005	0.709548	0.848176	0.412122	4247.91	12004.9	
21	603	849	0.78914	0.022151	0.660771	0.430121	4244.47	14201.1	
22	415	850	0.01751	0.848954	0.451037	0.101012	3078.11	14432.77	
23	487	1113	0.033384	0.024876	0.878884	0.30448	4473.91	14323.83	
24	484	1127	0.048944	0.100071	0.477006	0.101415	4188.17	14481.93	
25	675	3044	0.221848	0.049027	0.451049	0.421191	27794.57	14488.99	
26	542	1164	0.178048	0.048112	0.481112	0.804817	3834.11	14124.15	
27	540	2046	0.178749	0.481012	0.778714	0.371943	3160.11	12961.11	
28	457	841	0.145012	0.048947	0.412121	0.41841	4184.41	10141.11	

.csv file